



SOCIETY HILL

Reporter

www.societyhillcivic.org

Make Your Voice Heard

The Society Hill Civic Association (SHCA) invites all neighbors to the General Membership Meeting on September 21 to hear updates on topics concerning our community.

Jeanette Brugger, the City of Philadelphia Pedestrian & Bicycle Program Coordinator, will present an initial community outreach to Society Hill regarding the flexible delineator posts that are being explored for bike lanes on Spruce and Pine Streets.

Ms. Brugger looks forward to discussing some very preliminary information about this potential initiative. As of the publication deadline, the city has only received partial funding for the installation of such posts and has not yet begun the outreach that will be necessary, particularly to Society Hill, Washington Square West and Rittenhouse Square — the three communities along the Spruce and Pine Street bike lanes.

Visit www.philadelphiastreet.com/survey-and-design-bureau/bicycle-network/protected-bike-lanes to read frequently asked questions. We also encourage you to bring your own questions to the meeting. The city may not have all the answers yet, because the

parameters of the flexible delineator post project won't be known until the community outreach has been completed. Please see Page 5 for more about this issue.

In addition, South Street Headhouse District (SSHD) Executive Director **Mike Harris** will catch us up on the latest plans for redevelopment of the Plaza at 2nd and South Streets.



Mike Harris,
Executive
Director,
SSHD

Remember, everyone is welcome to attend our General Membership Meeting. Simply arrive at Pennsylvania Hospital's Zubrow Auditorium, located on the first floor inside the main entrance at 8th Street near Spruce, before 7:30 p.m. All SHCA members interested in Society Hill issues are welcome at our monthly Board Meeting, held at 6:00 p.m. in the Great Court Conference Room.



Jeanette Brugger,
City of Philadelphia
Pedestrian & Bicycle
Program Coordinator

WEDNESDAY
September
21

MARK YOUR CALENDAR
Society Hill Civic Association Meetings
Wednesday, September 21, 2016

**Pennsylvania Hospital
8th and Spruce Streets**

6:00 p.m. Board of Directors Meeting
Pennsylvania Great Court Conference Room
All SHCA members are welcome.

7:30 p.m. General Membership Meeting
Pennsylvania Hospital Zubrow Auditorium
All neighborhood residents are invited to attend.

Speakers
Jeanette Brugger, City Pedestrian & Bicycle Program Coordinator: *Flexible Delineator Posts for Bike Lanes*
Michael Harris, Executive Director, South Street Headhouse District: *Update*



Bonnie Haldá photo



Celebrating the Jewish High Holy Days is as easy as a walk in the park, RH² is FREE and open to the public. Find us in the southeast corner of Rittenhouse Square.

OCTOBER 2, 2016 • 5:00–7:00 PM
bzbi.org/events

5:00 PM: Concert with the Marom Band
6:00 PM: Traditional service



SOCIETY HILL

Reporter



Editor-in-Chief
Sandra Rothman

Columnists
Marilyn Appel
Claire Batten
Jane Biberman
Al Cavalari
Matt DeJulio
Julie Featherman
Martha Levine
Keri White

Contributors
Bonnie Halda
Lisa Kelly
Fred Manfred
Katy Wich

Graphic Design
judy@parallel-design.com

Submissions

If you have news that would be of interest to Society Hillers, email Sandra Rothman at sandra.rothman@aol.com. Materials must be submitted in writing and include the name of a contact person. Edited submissions will be considered for publication if space permits. Letters to the Editor must be signed, with contact information.

SHCA Mission Statement

The aims and purposes of SHCA are to promote the improvement of the Society Hill area of Philadelphia, including its cultural, educational and civic activities, and the preservation and restoration of its historic buildings; to represent the residents of Society Hill in matters affecting the City of Philadelphia generally and Society Hill in particular; and to interpret the value and significance of Society Hill to the public.

SHCA Board Officers and Directors

President
Rosanne Loesch

First Vice President
Martha Levine

Second Vice President
Kim Williams

Treasurer
Madeline Miller

Secretary
Diane Stein

Directors at Large
Georgine Atacan, Jeff Berry,
Amy DeMarco, George Dowdall,
Shelly Hirsh, Dan Horowitz,
Mary Purcell, Lisa Unger

NE Quadrant
Fred Manfred, George Kelley,
Robert Kramer

NW Quadrant
Sissie Lipton, Norman
Lieberman, Mary Tracy

Press Release Liaison
c/o Matt DeJulio
mattdejulio@aol.com

Advertising Manager
Lenore Hardy
hardy@drexel.edu

Submission Deadlines
Nov/Dec Issue
October 1

Society Hill Civic Association
P. O. Box 63503
Philadelphia, PA 19147
Tel. 215-629-1288

Website
Find past issues in color
at www.societyhillcivic.org.

SE Quadrant
Woody Rosenbach, Barbara
Gelman, Gail Hauptfuhrer

SW Quadrant
Alison T. Young, Carolyn
Ambler Walter, Martha Moore

Continuing Director
Bob Curley

Representatives
St. James Court
Norm Wisler

Penn's Landing Square
Loretta Burton

Independence Place
Jerry Yablin

Hopkinson House
Diane Rosshiem

Society Hill Towers
Lorna Katz Lawson

St. James Highrise
Priscilla McDougal

parallel design

Find our designs online.

BeyondTheLibertyBell.org
Parallel-Design.com

215-476-4040

Logos
Websites
Banners
Newsletters
Books
The Award-Winning
Brochures
Society Hill
Invitations
Reporter!

Bulletin Board

Snapshots of the people who make SHCA work.



Loretta Blasetti Burton

is a native Philadelphian who moved to Penn's Landing Square in 2014. She lived in Chestnut Hill for more than twenty years, where she raised her sons, Jared, who lives and works in Boulder, and Jonathan, the Director of the Philadelphia Society for the Preservation of Landmarks in Society Hill.

Loretta recently retired from the School District of Philadelphia where she was most recently the Librarian and Community Service Coordinator at Central High

School. Prior to that, she was a computer science teacher in the District. Loretta earned a Master's of Education Degree and a Post Master's Certificate in Instructional Technology. Combining the love of teaching and interest in technology, Loretta is starting a computer training business in the fall for older adults who are interested in learning new or enhancing technology skills.

Loretta enjoys gardening and is a member of the Society Hill PHS Tree Tender group. She also enjoys traveling and relishes time with her family especially her young granddaughter, Alessandra. Loretta recognizes the importance of taking an active role in our community and looks forward to supporting SHCA as a representative of Penn's Landing Square.



Congratulations to **Sissie Lipton** for receiving a Gold Citation for National and Community Service for her work in Washington Square! She was given both a gold coin and a letter from the White House congratulating her on receiving the President's Volunteer Service Award, signed by President Obama. A Gold award honors more than 500 hours of community volunteering over a 12-month period.

This award recognizes, celebrates and holds up as role models Americans making a positive impact as engaged and deeply committed volunteers. It enables community organizations to amplify their gratitude by joining with the President of the United States to thank their most dedicated volunteers.

Well deserved, Sissie!

Kudos to the **Reporter** team for placing first across the nation in the 41st annual Neighborhoods, USA newsletter competition! The criteria include content, layout and overall appearance. We have received recognition from this organization twice before, but it is the first time we can say we're number one!



In This Issue...

Page 5
Bike Lane and Fios Updates

Page 11
Keeping Posted: St. Peter's Church

Page 12
A Look Back in Time: Octavia Hill Association

Page 14
Out and About: Ribbon-cutting ceremony

Page 19
Headhouse Farmers' Market: Weaver's Way Co-op

Page 21
South Street Headhouse District: Philly Free Streets

Page 26
Nifty Neighbors in My Own Backyard: Jim and Marsha Moss

Go Dutch!

Hatville Deli

The Rib Stand

Miller's Twist

Dutch Eating Place

Dianner's Bar-B-Q Chicken

READING TERMINAL MARKET
 MON-SAT 8-6 & SUN 9-5 • \$4/2HR PARKING
 12TH & ARCH STREETS • 215-922-2317
 www.readingterminalmarket.org

Settlement Music School Mary Louise Curtis Branch



Join us for a free
Family Open House

Saturday, September 17
11 AM to 1 PM

Drop In Classes & Activities in
Music and Movement for Kids
Ages 6 Months to 10 Years!

Now enrolling for music & movement programs including private lessons, group classes, and ensembles!

416 Queen Street

215.320.2601

info@smsmusic.org

EARLY CHILDHOOD
CHILDREN
TEENS
ADULTS
ARTS THERAPY



**FINANCIAL AID
AVAILABLE!!**

Did you know Settlement awards more than \$2 million in financial aid and scholarships every year?

ALL Ages,
Musical Interests,
and Skill Levels!

settlementmusic.org/mlc

The CENTER for GROWTH

psychological counseling • therapy • support groups

**Achieve Greater Joy
Deepen Intimate Relationships
Get More Satisfaction Out of Life**

- Individual Counseling
- Couples Therapy
- Sex Therapy
- Imago Counseling
- Support Groups

**Call For Appointment
(267) 324-9564**

Present this ad at your 1st session & your 2nd session is **FREE.**

233 S. 6th Street, Suite C33, Philadelphia, PA 19106
www.therapyinphiladelphia.com

FRIENDS' CENTRAL SCHOOL

All-School
OPEN HOUSE
October 15

"I chose Friends' Central because I wanted a school that cared about the development and integrity of a person's character, not just the academic performance. The teachers here are very supportive and accommodating. They want to see you succeed, inside and outside the classroom."

- Mikaela, Friends' Central Class of 2017, new to FCS this year
 pictured as Titania in *A Midsummer Night's Dream*

friendscentral.org

UPDATES

Bike Lane Delineator Posts in Society Hill

SHCA has recently formed a committee to fact-find and disseminate information to our community about possible changes to bike lanes in Society Hill. The plan, called “Safe Spaces for Cyclists,” aims to erect delineator posts to further protect cyclists in key parts of the city where there have been numerous collisions involving bikes. We have contacted the 6th Police District, and they will provide us with the number, if any, of bike collisions in our bike lanes on Spruce and Pine Streets since they were established five years ago.

Jeanette Brugger, Pedestrian and Bike Program Coordinator of the Philadelphia Transportation Department, told us recently that the department will gather input from us here in Society Hill long before any design decisions are made. The process is lengthy, and they are just in the “feasibility for design” phase. This department’s job is to do what is best for each neighborhood, and they will have an open ear to our needs and concerns.

Nothing is 100 percent certain about locations of the delineators.

We have received comments from some homeowners who want to know how any changes will affect our quality of life — in terms of loading, unloading, delivery

trucks, taxis, snow removal, etc. — as well as the historic character of Society Hill. We will continue to seek the latest information and keep you up to date in a timely way. Jeanette will speak to us at the September 21 SHCA general membership at 7:30 p.m. Mark your calendars.

If you have questions, please direct them to our administrator Matt DeJulio at mattdejulio@aol.com.



An example of flexible delineator posts.

Verizon Fios Installation

In the last issue of the *Reporter*, we informed neighbors that Verizon was rolling out Fios capability across Philadelphia. Starting in early August, the company has been working in Society Hill to install Fios connection to individual homes, though homeowners must request the actual service from Verizon.phila.osp@verizon.com.

Over the course of the summer, with the help of our SHCA Block Coordinators, Verizon representative Brian Magee has met with neighbors at group meetings on many blocks to evaluate each home and answer questions. He is evaluating blocks individually as each one is different; some have multi-units or apartments, and it is difficult to get access to the owners or managers.

There are two options for Fios installation. The “daisy chain” installs Fios cable in the homeowner’s front or rear basement. Or the homeowner can choose sidewalk excavation, where the sidewalk must be dug up to install the cable in the same way as other utilities are done. Each option has pluses and minuses.

So far, interest level for the “daisy chain” has been high. Verizon will be able to quantify this by the end of September. Not every property can accommodate it, and it may still require the excavation.

When the surveying is done, Verizon will begin the installation starting with homes near Front Street and work going west. The Society Hill rollout will be in stages across 13 segments of the neighborhood. Residents will receive 30 days’ notice via US mail. One week before work starts, another notice will be made via door hangers.

To set up a group meeting with Brian and your block in September, please email him at verizon.phila.OSP@verizon.com.

 **COSMOS**
FINE NAIL SALON

PHILADELPHIA'S SALON FOR MEN & WOMEN
[NAILS ~ WAXING ~ MASSAGE]

<p>1204 walnut street (215) 627 - 1020 mon-wed: 930a - 700p thurs-fri: 930a - 800p sat: 930a - 600p sun: 930a - 600p</p>	<p>1308 sansom street (215) 545 - 5456 mon-wed: 930a - 700p thurs-fri: 930a - 700p sat: 930a - 600p sun: closed</p>
---	--

 RESERVATIONS RECOMMENDED 

A symphony of style for your home.



Featuring the area's largest selection of decorative & architectural hardware, home accents and unique gifts.

KNOBS 'N KNOCKERS

If you can dream it, we can provide it.

Peddler's Village, Lahaska
215.794.8045 • knobsnknockers.com

We offer a complete line of services to care for your property.



Complimentary Consultation

By Peter McFarland, Certified Arborist, MA-0164A

Call our office at 215-844-TREE to make an appointment for a consultation to review your property.

Tree & Shrub Healthcare

- Custom Tree Pruning
- Tree Removal
- Cabling & Bracing
- Insect & Disease Management

Landscaping

- Planting Trees
- Planting Gardens
- Custom Shrub Pruning

Sidewalks

- Brick Replacement



McFARLAND
Tree & Landscape Services

www.mcfarlandtree.com



W E L C O M E B A S K E T S

A Society Hill Welcome

If you are a new first-time homeowner, you are eligible to receive a gift from SHCA: The Welcome Basket. It's filled with fresh foods, important neighborhood information and many gift certificates to area theaters, restaurants, shops, services and museums. To have a basket presented to you in your home, please contact us for an appointment at your convenience. Contact coordinator Martha Levine, 215-629-0727 or marthalev6@gmail.com.

We welcome two new contributors to our Welcome Basket family.

Keating's Rope and Anchor, Bar & Kitchen, at the Hilton Philadelphia, at Penn's Landing, 201 S. Columbus Boulevard. 215-521-6500. The restaurant serves contemporary American

cuisine with an emphasis on sustainable seafood. A social eatery, this waterfront dining experience draws inspiration from the heritage of Penn's Landing and its maritime routes. Website: www.ropelandanchorkitchen.com.

Prince Theater, Next Move Dance, 1412 Chestnut Street, 215-422-4580. See world-class dance entertainment right here in Philadelphia, featuring eight iconic dance companies with a total of 48 performances from October 2016 through May 2017. Subscriptions available. Website: www.princetheater.org/nextmove.

As always, we give our sincerest thanks to all 67 contributors to our Welcome Baskets and encourage all neighbors to patronize their businesses and organizations.

2016 SOCIETY HILL WELCOME BASKET CONTRIBUTORS

Coffee Shops

Old City Coffee, 221 Church Street/Reading Terminal Market
Starbucks Coffee Inc., 8th & Walnut Streets

Food Stores

Acme Market, 5th & Pine Streets

Restaurants

Bistro Romano, 120 Lombard Street
Bridget Foy's, 200 South Street
City Tavern, 138 S. 2nd Street
Creperie Beau Monde, 624 S. 6th Street
Don Quixote Tapas, 526 S. 4th Street
Fork, 306 Market Street
Frieda's Café, 320 Walnut Street
Garces Group: Amada, 217 Chestnut Street;
Rosa Blanca, 707 Chestnut Street; and others
Gnocchi, 613 E. Passyunk Ave. (near 5th & South)
High Street on Market, 308 Market Street
Keating's Rope & Anchor, Bar & Kitchen
@ The Hilton at Penn's Landing
La Buca Ristorante, 711 Locust Street
La Fournò, 636 South Street
Le Pain Quotidien, 801 Walnut Street
Malbec Argentine Steakhouse, 400-402 S. 2nd Street
Mustard Greens (Chinese), 622 S. 2nd Street
Positano Coast Restaurant, 2nd & Walnut Streets
Ristorante Panorama, 14 N. Front Street
Serpico, 604 South Street
Talula's Daily, café & take out, 208 W. Washington Square
The Farm & Fisherman, 1120 Pine Street



Head House Books, 619 S. 2nd Street
Lolli Lolli (children's clothing/toys), 713 Walnut Street
Paper On Pine (invitations/stationery), 115 S. 13th Street
Show of Hands Gallery (crafts), 1006 Pine Street
Yarnphoria (yarn and supplies), 1016 Pine Street

Theaters/Entertainment

Annenberg Center for the Performing Arts, 3680 Walnut Street
Arden Theater, 40 N. 2nd Street
Ballet X at Wilma Theater, 265 S. Broad Street
1812 Productions (all comedy theater), 215-592-9560
Ghost Tours of Philadelphia, 610-587-8308
Historic Philadelphia Inc., SW corner, 6th & Chestnut Streets
Independence Seaport Museum, 211 South Columbus Blvd.
InterAct Theater Company, at the Drake, 1512 Spruce Street
Lantern Theater Company, 10th & Ludlow Streets (south of Market)
Lights of Liberty – featuring Liberty 360, 6th & Chestnut Streets
Museum of American Jewish History, 5th & Market Streets
National Liberty Museum, 321 Chestnut Street
Pennsylvania Ballet, Academy of Music, Broad & Locust Streets
Penn's Landing Playhouse @ the Seaport Museum, 211 S. Columbus Boulevard
Philadelphia Chamber Music Society 215-569-8080
Philadelphia History Museum, 15 S. 7th Street
Philadelphia Shakespeare Theatre, 2111 Sansom Street
Philadelphia Society for the Preservation of Landmarks, 321 S. 4th Street
Philadelphia Theatre Company, Suzanne Roberts Theater, Broad & Pine Streets
Piffaro, The Renaissance Band, 215-235-8469
Prince Theater – Next Move Dance Affiliates, 1412 Chestnut Street
The Chamber Orchestra of Philadelphia, Kimmel Center, 215-545-1739
The Philadelphia Chamber Ensemble, Old Pine Church, 412 Pine Street
Wilma Theater, 265 S. Broad Street



Specialty Foods

Homemade Goodies by Roz, 510 S. 5th Street
Knead Bagels, 725 Walnut Street
Melange Tea & Spice, 1042 Pine Street
Metropolitan Bakery, 262 S. 19th Street (Rittenhouse Square)
South Street Bagels, 613 S. 3rd Street

Specialty Shops

Adornamenti (jewelry), 1106 Pine Street
Cohen & Co. Hardware, 615 E. Passyunk (off 5th & South)
Happily Ever After (toys), 1010 Pine Street

Other Services

In Good Health, Therapeutic Massage, 232 S. 4th Street
Judy Moon Massage Therapy, Hopkinson House, 604 Washington Square
Liberty Tree & Landscape Management, 215-725-3637
Petmoir, A Memoir of Your Pet, 215-803-0723, www.petmoir.com
Riff Cleaners, 314 S. 5th Street
SCULPT – Personal Trainer, 215-803-0723
The Worth Collection (women's fashions), 215-925-8813, spattison@comcast.net

Happy students have a favorite subject—
All of them

FASCINATION
FOREVER BRIGHT

FRIENDS SELECT

KEATING'S ROPE & ANCHOR
BAR + KITCHEN

OUTDOOR DINING. WATERFRONT VIEWS.
CULINARY CRAFTSMANSHIP.

SERVING DAILY:
BREAKFAST
LUNCH
DINNER
PATIO
COCKTAIL AND
BAR MENUS

ENJOY 15% OFF
Your next meal with us!*

201 S. CHRISTOPHER COLUMBUS BLVD. ALONG THE WATER FRONT AT HILTON PENN'S LANDING.

RopeandAnchorKitchen.com

*Not valid with any other offer. Discount cannot be applied to alcohol. Offer expires 9/30/16.

Great
Searching For A Good Plumbing, Heating & Air Conditioning Company

the TOP 5 REASONS TO CALL US FOR ALL YOUR PLUMBING, HEATING & COOLING SERVICE

SHCA MEMBER

Winner 2009-2015

BBB

1. REPAIR GUARANTEE If a repair fails during the first year, we will repair it again for FREE
2. JOB DONE RIGHT We will fix it right the first time Or You Don't Pay
3. NO SURPRISES GUARANTEE We will give you a price up-front before starting the work. Once we start the job the price will not change, even if it is more work than we anticipated.
4. FAIR PRICE GUARANTEE No need to shop around. Our pricing is from our Flat Rate Book. If ever in doubt, always ask your contractor to show you their flat rate book to show how they arrived at the price.
5. SECURITY GUARANTEE Our technicians are background checked, drug tested, uniformed and wear company identification

Members of Society Hill Civic Association:
Take \$55. off any plumbing, heating or A/C repair, and \$333. off any heating and A/C installation.

Joseph Giannone
PLUMBING • HEATING • AIR CONDITIONING
www.calljg.com • 215-383-2957

ADORNAMENTI

1106 Pine Street
215.922.2722

Collection of Art-To-Wear Jewelry

SHOW OF HANDS

1006 Pine Street
215-592-4010

Collection of Mid-Century Murano Glass and Contemporary Crafts

We contribute to Welcome Basket.
We are located on Historic Antique Row.

HOW SAVVY ARE YOU?

Ins and Outs of City Recycling

In the past few years, Philadelphia has made tremendous strides in curbside recycling with residential curbside recycling rates at an all-time high.

Recycling provides raw materials to manufacturers and helps create green jobs, preserve natural resources, reduce energy consumption and reduce greenhouse gas emissions.

Recycling also provides fiscal benefits for the city. In 2012, the city earned more than \$6.6 million in recyclables revenues and saved more than \$8 million by not having to dispose of recyclables in the trash. The nearly \$15 million in combined revenues and savings helped the city fund other crucial services, including police and fire protection, parks and open space and citizen services.

The following items have little or no value as raw materials, damage recycling equipment and can even injure workers. Please leave them out!

- plastic bags
- Styrofoam™ food/beverage containers
- Styrofoam™ shipping/packing material
- food waste
- wet or food-soiled paper
- waxed paper plates, cups and takeout containers
- greasy pizza boxes
- tissues, paper towels and napkins
- light bulbs
- porcelain and non-container glass
- cassette tapes (VHS and audio)
- garden hoses
- needles and syringes
- electronics



Test Your Recycling Knowledge

Take this test to see whether you're recycling savvy.

1 Cartons go in:

_____ Recycling Bin _____ Trash Can

2 Disposable coffee cups go in:

_____ Recycling Bin _____ Trash Can

3 Plastic buckets go in:

_____ Recycling Bin _____ Trash Can

4 Clean aluminum foil goes in:

_____ Recycling Bin _____ Trash Can

5 Paper napkins go in:

_____ Recycling Bin _____ Trash Can

6 Empty aerosol cans go in:

_____ Recycling Bin _____ Trash Can

7 Shampoo and lotion bottles go in:

_____ Recycling Bin _____ Trash Can

8 Plastic bags should not go in the recycling bin.

_____ True _____ False

9 Put only spotless items in the recycling bin.

_____ True _____ False

10 Greasy cardboard can't be recycled.

_____ True _____ False

11 Styrofoam is not recyclable curbside.

_____ True _____ False

Answers

- 1 All cartons including milk, juice, broth, wine, ice cream and soup cartons are now recyclable.
- 2 Coffee cups are not recyclable because they have a plastic lining that can't be separated at the recycling facility. Switching to a reusable cup once a day can save 5 trees over 10 years.
- 3 As long as they fit in your bin, plastic buckets are recyclable. Remove any metal handles.
- 4 As long as it's clean, aluminum foil, aluminum pie and baking tins are recyclable curbside.
- 5 Napkins, tissues and paper towels go in the trash. The fibers are too short for recycling.
- 6 Aerosol cans are recyclable. Insure they're completely empty so they don't explode during the recycling process.
- 7 All plastic bottles are recyclable in Philly. After rinsing, replace the lids for recycling.
- 8 Plastic bags can be recycled at most local grocery stores, but not curbside.
- 9 Items do not have to be spotless, just empty.
- 10 Greasy or food-crusting cardboard is not recyclable, but don't toss the whole box. Tear off greasy parts and recycle the rest.
- 11 Styrofoam products including cups, plates, packing peanuts, foam blocks and coolers are not accepted in the curbside recycling bins. Styrofoam can be recycled at the Northeast Convenience Center located at State Road and Ashburner Street.



All Gloria Dei's venerable trees remained standing in Hurricane Sandy, preserving the historic graves below.

HISTORIC TREES UNHURT IN HURRICANE SANDY

... Thanks to Liberty Tree & Landscape Management

When Hurricane Sandy pummeled the city in late October, 2012, not one of the many 200+-year-old trees at Gloria Dei Church on Columbus Blvd. came down. Pastor Joy Segal credits that feat to the outstanding work of Liberty Tree and Landscape Management.

See why so many people recommend Liberty Tree on Angie's List. *Your satisfaction is guaranteed!*

Some Other Liberty Tree Clients:

- | | |
|----------------------------------|------------------------------|
| <i>Pennsylvania Hospital</i> | <i>Elfreth's Alley</i> |
| <i>Rittenhouse Square</i> | <i>National Park Service</i> |
| <i>Washington Square</i> | <i>Bartram's Garden</i> |
| <i>Philadelphia Cricket Club</i> | |



215. 886. 6111 | Oreland, Pa
 215. 725. 3637 | Philadelphia, Pa
 215. 572. 6937 | Fax
www.libertytreecare.com

Mike Duffy
 Certified Arborist
 PD-1766A



OUR PROFESSIONAL CAREGIVERS ARE READY TO LEND A HAND.



Home Helpers is Philadelphia's premier provider of non-medical and personal in-home care. Our caregivers are employed by us and are fully insured and bonded.

We know that finding quality care is challenging and can often be overwhelming. We offer a full-range of elite caregiver services such as,

- Mobility care
- Personal hygiene
- Light housekeeping
- Medication reminders
- Safe Escort to and from appointments
- Meal Preparation/Dining Assistance
- Companionship
- Direct Link Personal Response System
- And much more.

Call for a **FREE** no-obligation needs assessment and let us start lending you a hand today!
 Patty Grace at (267) 402-7271 or email pgrace@homehelpersphilly.com



COMMUNICATION MADE EASY



ON DEMAND PRINTING SOLUTIONS

Media Copy is a full service digital printing company with offices in Center City Philadelphia, and the suburbs. State of the art technology, extraordinary customer service and attention to detail place us apart from the competition. Our infrastructure allows us to provide our customers with high quality products in a cost effective fashion. From conception to completion, the basic to the complex, we are on the job with the personal attention you should expect.

Philadelphia Location:
 1310 Sansom Street · Philadelphia, PA 19107
 phone: 215.717.5151 · fax: 215.717.7400

Media Location:
 11 East State Street · Media, PA 19063
 phone: 610.566.8499 · fax: 610.566.4513

www.mediacopyonline.com

KEEPING POSTED

BY AL CAVALARI

A Bit of History Mystery

This post card from 1907 affords us the opportunity to discuss a quirk of history. St. Peter's churchyard hosts the grave of George Mifflin Dallas, former mayor of Philadelphia and Vice President of the United States under James Polk. While the church's web site and other sources state that Dallas, Texas, is named after George Dallas, an examination of the story finds this idea improbable.

According to the Dallas City Secretary's office, John Neely Bryan founded the city but left behind no evidence as to how he chose the name. Few of his writings survive. An acquaintance of Bryan's is in the historical record stating that Bryan said, "The town was named for my friend, Dallas." The problem becomes which Dallas is meant. Various sources offer seven different candidates for the bragging rights, but our local Mr. Dallas seems unlikely. There is no evidence that Bryan ever knew George Dallas. According to Wikipedia, George Dallas never traveled very far west of Philadelphia and Bryan never traveled very far east of Memphis. There is no evidence of George having an interest in Texas until he made a "casual reference" in an 1844 letter, three years after the town was already named.

It's also interesting to know that St. Peter's steeple was designed by William Strickland, the same architect who created the tower for Independence Hall and the Second Bank building on Chestnut Street. The bank now houses the portrait collection of Charles Wilson Peale, revolutionary war soldier and artist, whose grave is in St. Peter's churchyard.

Founded in 1758, most of the church is unchanged from the 18th century. It retains the original high-back box pews, which were in use when the Washington's frequented services here.

Tour guides are available at St. Peter's Church from 11 a.m. to 1 p.m. on Saturdays and from 1 to 3 p.m. on Sundays. Occasionally the church and tour guide schedule varies; please call the parish office at 215-925-5968 in advance of your visit to confirm that the church will be open and a tour guide will be available.

Al Cavalari is a certified member of the Association of Philadelphia Tour Guides and gives tours as a volunteer for the National Park Service. For a day job he operates The Flag Guys, a flag business in upstate New York.



St. Peter's Episcopal Church in quieter times.

The 6th Annual River-to-River 12-Hour Tour Saturday, September 24, 8 a.m. - 8 p.m.

This 12-hour, free tour covers the city from river to river, from Pine Street to Vine Street. It takes place in four separate two and a half hour phases. Each visits as many as 25 cultural and historic sites. You can walk the whole tour from start to finish, or join at any of the staging points. Visit www.facebook.com/phillyguides for more information.

REGISTER TO VOTE!

The deadline for registering to vote in the important 2016 general election is October 11, 30 days before Election Day, November 8. A person must be a citizen of the United States for at least 30 days, a resident of Pennsylvania and the election district for at least 30 days, and at least 18 years old on Election Day. Voters must register where they currently live or reside. Visit www.seventy.org to find the ways you can register.



SONOS

ENJOY ALL OF YOUR MUSIC,
IN EVERY ROOM OF YOUR HOME,
WIRELESSLY.

No wires and no drilling.
Ask for a **FREE** in home consultation.



Apple Specialist

116 S. 13th Street
Philadelphia, PA
215-599-0794
springboardmedia.com

A LOOK BACK IN TIME

BY SANDRA ROTHMAN

Octavia Hill Association

“The Octavia Hill Association is an independent organization that works to promote by education and active cooperation a higher public spirit and a better social order.’ It sees in insanitary, dilapidated and overcrowded dwellings influences that lower the moral and the physical health of Philadelphia...”

Octavia Hill Association's first Annual Report, January 1, 1897

Travel north on Front Street, between Fitzwater and Pemberton, and notice a sign for the Octavia Hill Association (OHA). Explore a bit more and you'll discover Workman Place, an island of peace and privacy in the densely housed Queen Village neighborhood.

Here, within a stone's throw of Society Hill, is a surviving material artifact of Progressive-era housing reform.

A Woman With A Mission

Octavia Hill, an English social reformer, was born in London in 1838 and worked from the age of 14 to improve the lives of urban working-class people.

She believed in self-reliance, was against the bureaucratic provision of municipal housing and was adamant about providing open spaces for poor people. The Settlement Movement — creating integrated, mixed-communities of rich and poor — grew directly out of Hill's work.

A City of Homes

On the other side of the ocean, Philadelphia was known as a “city of homes,” not of tenement dwellings as in other urban areas. By the late 19th century, however, this reputation was starting to tarnish. In many neighborhoods, the back alleys and courtyards were densely packed with poor people and provided little in the way of sanitation. Emily Wayland Dinwiddie writes in *Housing Conditions in Philadelphia* (published in 1904) of one apartment, consisting of a single room and bath, occupied by a family of seven. Another small, six-room building housed six families comprised of 20 people.

These abysmal conditions attracted the attention of reformers who wanted to aid African American and immigrant residents in communities such as Southwark, today's Queen Village.

continued on page 13



“I pinch myself every time I come home because I feel so lucky to live here.”

The Luxury.
The Views.
The Lifestyle.

THE ST·JAMES
WASHINGTON SQ.

200 W. Washington Square
Philadelphia, PA 19106
thestjamesphiladelphia.com
844.762.5416

A L O O K B A C K I N T I M E

continued from page 12

Hannah Fox and Helen C. Jenks, prominent Quaker women interested in social service, founded the Octavia Hill Association after attending a lecture about the slum conditions in the city's fourth and fifth wards, neighborhoods directly surrounding our own Society Hill. In 1888, the women purchased and refurbished two houses on Rodman Street, renting them to African American families.

Hannah's cousin Helen Parrish then visited Octavia Hill in London for six months to learn more about putting the reformer's theories into practice.

Five Percent Philanthropy

Octavia Hill sought to improve housing conditions for the working class by refurbishing slum dwellings with capital that would provide a five percent return to investors. Previous attempts for reform were founded along religious charitable lines and failed to be successful.

Friendly Rent Collectors

Hill observed that many of the problems preventing the poor from renting decent and affordable housing were caused by absentee landlords. She believed that personal relationships could be formed through the use of female "friendly rent collectors," who would make it their mission to instill values of thrift and responsibility as they collected rent each month.

Octavia Hill Association

The reformers who founded Philadelphia's Octavia Hill Association shared her belief in the power of both environment and example to change and dignify lives. Tenants were expected to contribute rent and their own effort to maintain the dwellings that were renovated with capital raised by Five Percent Philanthropy.

The Association's first properties were located in wards along the Delaware River just below South Street, where one-tenth of the city's population was densely packed into one-eightieth of the available area.

Workman Place

Nearly three decades before the signing of the Declaration of Independence, George Mifflin, the grandson of William Penn, erected a group of small tenement buildings for the families of middle-class workmen employed at the nearby waterfront. The Mifflin family sold the buildings and the large lot behind them to John Workman, who constructed three larger houses along 742-46 Front Street in 1812. The lot became a common central courtyard.



Workman Place. Note 'GM' (for George Mifflin) and construction date '1748' on the walls.



George Mifflin Houses and Workman's Court at Front and Pemberton Streets; illustration by Frank Taylor; 1914

Lydia S. Clark, an advocate for housing reform, purchased the buildings from the Workman family in 1906 and later employed the Octavia Hill Association to manage and maintain them. OHA purchased the property in 1946 and still owns and manages it.

The Present Day

The Octavia Hill Association expanded its activities to other areas of the city, including Germantown, Kensington and Manayunk. By 1929, it owned or managed 450 housing units.

The scope of OHA's activities changed in the 20th century as new legislation and agencies enforced stricter building codes, municipal services improved and the federal government became involved in public housing projects.

After World War II, the Association incorporated as a real estate management company that now manages both luxury and affordable housing in many areas of the city.

Sandra Rothman, a retired educator for the School District of Philadelphia, is the editor of the *Reporter*.

OUT AND ABOUT

A Gift That Will Keep On Giving

Independence National Historical Park (INHP) celebrated the National Park Service's Centennial with a ribbon-cutting ceremony honoring SHCA's contributions to Washington Square on June 2. Councilman Mark Squilla, State Representative Michael O'Brien and INHP Superintendent Cynthia MacLeod addressed the gathering.

Our civic association, using funds raised from the Washington Square Affairs and private donations, revamped the fountain and memorial areas and

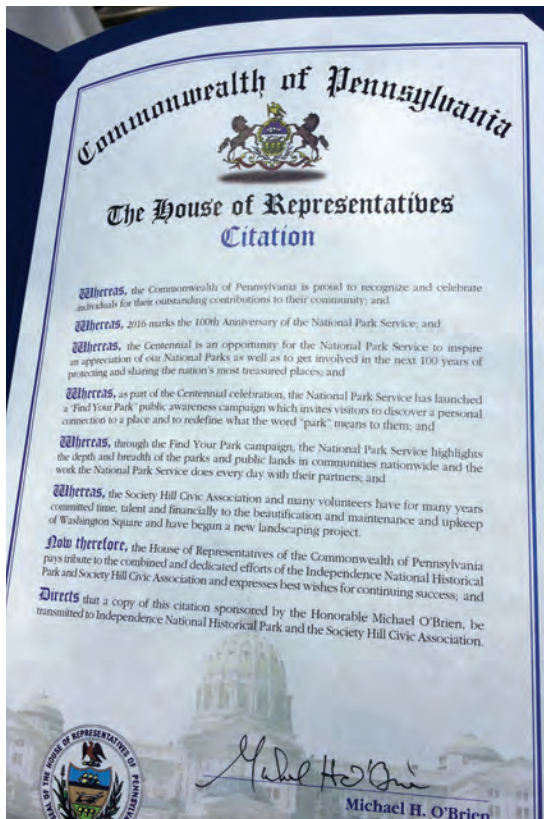
upgraded the sprinkler system. This gift is guaranteed to bring pleasure to our neighbors for years to come.

Special thanks to Laurie Olin and his firm The Olin Studio for donating professional services and Special Sponsors Suzanne and Norman Cohn, as well as Bernie and Joan Spain, for their very generous contributions. And none of this could have happened without the hard work and vision of both Sissie Lipton and Bobbi Karafin. See page 3 for more about Sissie.

As part of its Centennial celebration, the National Park Service honored SHCA's contributions to Washington Square.



OUT AND ABOUT



Top 6% of all Realtors in Prudential Network Nationwide
Accredited Luxury Home Specialist
Diamond Award

I am a professional,
full-time real estate agent
as well as your neighbor.

■ **PAMELA D. LAWS**

ABR, ALHS, SRES, ASP



Like many of my clients,
Society Hill is my home.
I specialize in Center City
because I love Philadelphia.
Let me find the perfect
townhome or condo for you!



BERKSHIRE HATHAWAY HomeServices
Fox & Roach, REALTORS

215.790.5688 pam.laws@prufoxroach.com
WWW.PHILADELPHIAPROPERTIES.NET

An independently owned and operated member of the Prudential Real Estate Affiliates, Inc.

Thinking about selling your house?

Now is an excellent time!
Mortgage rates are low...
demand is strong.

Pat Donohue



kw
KELLERWILLIAMS

LUXURY HOMES
INTERNATIONAL

REALTOR

1619 Walnut

Street, Philadelphia, PA 19103

Mobile: 215-990-1902

Office: 215-627-3500

email: patdonohue@kw.com

www.philadelphiatownhouse.com



In 2015, Mike McCann "The Real Estate Man"
and The McCann Team settled over 794 properties (over 2 a day)!
Awarded #1 Team in the USA! Put the power of #1 to work for you!

SEE ALL OF OUR LISTINGS AND WEEKEND
OPEN HOUSES ON OUR WEBSITE!

www.MCCANNTEAM.com

MIKE McCANN
"The Real Estate Man"
The McCann Team

BERKSHIRE HATHAWAY
HomeServices Fox & Roach

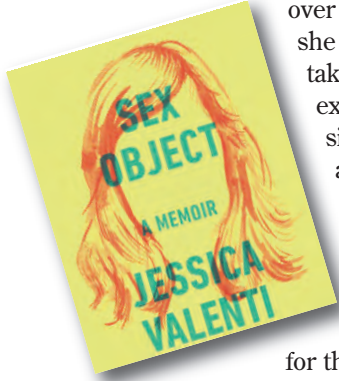
Office: 215-627-6005 | Direct: 215-440-8345 | mccann@mccannteam.com

ON OUR SHELF

BY MARGARET GUSHUE

Sex Object: A Memoir by Jessica Valenti

Author and *Guardian US* columnist Jessica Valenti has been leading the national conversation on gender and politics for over a decade. In this memoir, she explores the toll that sexism takes from the everyday to the existential. The premise is a simple one. Valenti describes a reoccurring nightmare she had as a child of being chased by wolves. Within a few paragraphs she acknowledges that these wolves were a symbol



for the men she felt threatened by. This leads her to ask, "Who would I be if I didn't live in a world that hated women?"

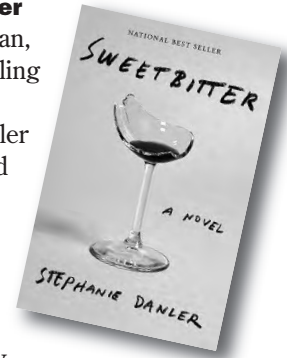
Valenti has no interest in making light of the harassment and sexism she has experienced in her life. This no-nonsense take on a feminist memoir made it feel refreshing and different, even if at times the rage was palpable. She does not label herself as a sex object; instead, she recalls the ways she has been objectified.

As a memoir, the book can feel a little like a solo affair. Readers learn where she grew up, how she felt in school, but the revolving characters — Mother, Father, Husband, Bad Ex-Boyfriend — never feel completely fleshed out. The exception is her daughter. Valenti's anxiety and hope for Layla color every description.

Sex Object succeeds as a well-written memoir, making the personal political from the very first pages. Readers familiar with the genre can appreciate that the book does not end with a marriage or any other life-affirming experience. Anyone with the slightest interest in feminism or what it means to be a woman can learn from *Sex Object*.

Sweetbitter by Stephanie Danler

This debut novel is a bildungsroman, traditionally defined as a book dealing with a person's formative years or spiritual education. Stephanie Danler plays with this concept, but instead of college, the protagonist Tess navigates the world of fine dining. The reader is alongside her as she learns how to taste and differentiate wines, tries oysters and finds a home in New York City.



Sweetbitter begins in 2006, when Tess first arrives in New York City, with only her car and few belongings. By luck, she gets a job at a high-end restaurant in Manhattan and her awakening begins. Nobody explains anything to her, and she is expected to follow, observe and understand how to do everything at a dizzying rate. While she does eventually pick everything up and becomes part of the restaurant family, the reader is included both in the initial struggle and the eventual satisfaction when Tess masters how to properly open a bottle of wine.

The real joy in reading Stephanie Danler's book is the description of both the food Tess eats and the world she becomes comfortable in. Getting lost in the addictive, demanding and, as Danler herself put it, physically punishing experience of a server is exciting.

Ultimately, *Sweetbitter* is a coming-of-age novel, but Danler executes a salacious novel with literary merit, making it a sensual and invigorating read.

Margaret Gushue is a bookseller at Head House Books, Society Hill's only local, independently owned bookstore, located at 619 S. 2nd Street.

Bring this article to Head House Books and receive 20 percent off any hardcover fiction or nonfiction title in the store, or have Headhouse Books donate it to SHCA on your behalf.

SYNERGY[®] HomeCare
 The Most Trusted Name in Home Care
 Companionship • Homemaking
 Meal Preparation • Personal Care
 Call for your FREE Care Assessment!
(267) 499-4700
www.synergyhomecare.com

R. CHOBERT PAINTING
 Residential | Commercial | Interior | Exterior
www.rchobertpainting.com
 Creating Beauty Since 1967
Michael Chobert 215-389-7788
 Fax 215-755-6655
rchobertpainting@aol.com
 641 Reed Street, Phila. PA 19147

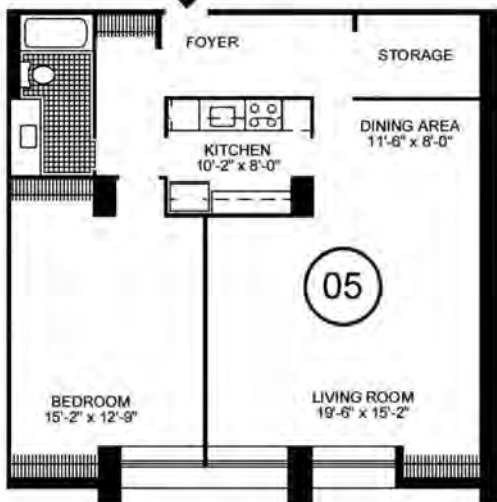


Hopkinson House

604 S. Washington Square



Large one bedroom on a high floor with an open living and dining area, galley kitchen, a private balcony overlooking Washington Square, and ample closet and storage space throughout. 843 sf | **\$339,000**

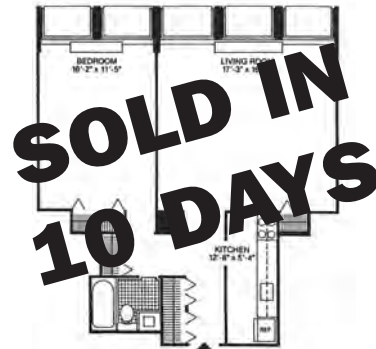


Deluxe one bedroom on a high floor with spectacular southern views, galley kitchen, oversized windows allowing generous natural light, and excellent closet space throughout. 1,003 sf | **\$379,900**



SOCIETY HILL TOWERS

200-220 Locust Street



Sun-filled updated one bedroom, one bathroom with eleven foot windows boasting spectacular river views to the south. 700 sf | **\$269,900**



SALE PENDING

One-of-a-kind studio penthouse with spectacular panoramic views, a large walk-in hallway closet, open living area with floor-to-ceiling windows, and a unique lofted sleeping area offering room for two. Great potential! 522 sf | **\$225,000**



SALE PENDING

Unique one bedroom, one bathroom penthouse with soaring ceilings, exposed wood beams, updated kitchen and bathroom, and open living area with floor-to-ceiling windows offering breathtaking panoramic river and city views. Needs some work. 728 sf | **\$339,000**

HEADHOUSE FARMERS' MARKET

BY KATY WICH AND LISA KELLY OF THE FOOD TRUST

Weaver's Way Co-op

Weavers Way is a stalwart at the Food Trust's Headhouse Farmers Market. This local Northwest Philadelphian farming co-op has been a merchant at Headhouse since the market reopened in 2007.

Did you ever wonder why this farming collective is so named? The name refers to a pioneering group of weavers in Rochdale, England, who established one of the first successful food co-ops in 1844. They did so "to provide an alternative to poor-quality and adulterated food and provisions, using any surplus to benefit the community," according to the International Co-operative Alliance.

The original Co-op developed a charter of operating principles, which two centuries later still shape the ethos of the co-operative movement worldwide. The founders of Weavers Way named their organization as a tribute to the work of those weavers in the 19th century. Today, Weavers Way is an extensive organization, partnering with programs in schools and local communities, and has established a highly successful Community Supported Agriculture (CSA) program that involves some 150 member households. In addition, Weavers Way now operates four retail stores in Northwest Philadelphia.

Nina Berryman is the Farm Manager for Weavers Way and is a familiar face at the Headhouse Market. Berryman took time out from her busy schedule to give us an idea of what to expect this autumn. "With the colder weather, you'll begin to see our fall crops. At the tail end of summer, we will still have tomatoes, eggplants, peppers and carrots, which will keep going into the fall. What you will start

to see, however, is the appearance of radishes, turnips and specialty crops, like the Daikon radish, which is getting popular. We do our best to provide a constant supply of fresh bunched herbs and salad greens, and we're known for that. The Headhouse Market is a long season," continues Berryman, "so we use hoop houses that provide passive heat, and then we can still grow all of our vegetables in the ground."

While the Weavers Way produce cannot be advertised as being "organically certified," produce is grown using natural agricultural methods. As Berryman explains, "Since we aren't technically certified, we can't formally market our products as 'organic,' but we don't use chemical pesticides on our farms. We prefer more natural methods. For example, we recently had an infestation of Mexican bean beetles in our bean crop. To remedy the problem, we will turn to helpful insects and introduce beneficial wasps, which do not sting humans, but they do go after the bean beetles. There are alternative methods to using chemicals in farming and we prefer to go this route."

Weavers Way features a number of healthy and delicious seasonal recipes on their blog. To find out more about this organization, please visit www.weaversway.coop. If you are interested in learning more about the CSA, email henrygotcrops@weaversway.coop



Nina Berryman, Farm Manager for Weavers Way



The Food Trust, in partnership with Get Healthy Philly, operates more than 25 Farmers Markets in Philadelphia, including the Headhouse Farmers Market, Philadelphia's largest outdoor market. For more than twenty years, The Food Trust has been working to ensure that everyone has access to affordable, nutritious food and information to make healthy decisions. For more info, visit www.thefoodtrust.org.

Intelligent Exercise with Profound Results!
 New client special:
 Three one-hour private sessions for \$125.00 at our fully equipped Center City studio at 9th and Spruce Streets.



PilatesByPamela
 Stott Pilates Certified Instructor
 267-519-3639
pilatesbypamela@gmail.com www.pilatesbypamela.com

Piano Lessons
 for all ages

Beiling Foss
 Piano Teacher

931 E Moyamensing Ave.
 Philadelphia, PA 19147

(440) 289-6289
dolce86@ymail.com



247 PINE STREET



This endlessly elegant four story single family 4 bedroom, 3.5 bath townhome has been thoughtfully modernized while maintaining its original character. The historic home features an extra wide living room with a fireplace and oversized windows, glass solarium dining room, a fully renovated kitchen, and a private patio and garden perfect for entertaining. There is a sun-filled den/library with cathedral ceilings and exposed brick, a master suite with a fireplace and original pine floors, a large finished basement, and ample closet and storage space throughout. 3,246 sf | **\$1,195,000**

212 DELANCEY STREET

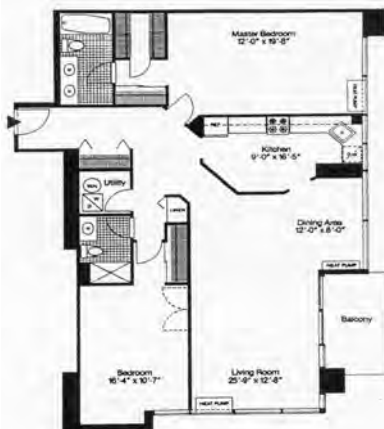


SALE PENDING

This one-of-a-kind 3 bedroom plus den, 2 full, 2 half bathroom home features a marble foyer, eat-in kitchen, dining room, and custom mural work throughout. There is a bi-level den with a spiral staircase, sun-soaked master suite, and a grand living space complete with soaring ceilings, marble floor, and sliding glass doors that open to a charming brick patio. Priced to buy, this a perfect opportunity to restore or enhance this Society Hill gem. 2,838 sf | **\$839,900**

INDEPENDENCE PLACE

233 - 241 S. 6th Street



Sun-soaked two bedroom, two bathroom with floor to ceiling windows, master bedroom with a walk-in closet, and a private balcony offering magnificent views to the south and west. 1,387 sf | **\$789,000**



SOLD! WE CAN SELL YOURS, TOO!

Corner 3 bedroom, 2 bathroom on a high floor with balcony. 2,045 sf | **\$1,050,000**

SOUTH STREET HEADHOUSE DISTRICT

BY KERI WHITE

New Signage in the District

In an effort to improve public safety and address neighbors' concerns about noise, trash and loitering, SSHD has installed new signage throughout the surrounding communities of Society Hill, Queen Village, Bella Vista and Washington Square West. Visitors are now informed that they are in a residential neighborhood and asked to respect neighbors by behaving courteously. Additional signs alert drivers that security cameras have been placed throughout the District. This is just another way that SSHD strives to be a good neighbor and ensure that they are contributing positively to the community.



New Sign

streets barricaded and closed to traffic. They walked and biked and ran through the empty streets freely. In fact, they loved it so much that a group called Open Streets PHL was started with the goal of closing down the streets again, resulting in "Philly Free Streets."

SouthStreet Headhouse District (SSHD) Executive Director Mike Harris says, "We were thrilled to be chosen for this pilot program by the city. We anticipate a great day that will enable neighbors, visitors and businesses to experience the uniqueness of South Street. The event will really show the balance between residence and commerce, which is one of the really wonderful things about the District."

The route will follow South Street up the Schuylkill River Trail, along Martin Luther King Jr. Drive and into West Fairmount Park, passing through 15 neighborhoods along the way. The more than seven-mile route will include free, family-friendly fitness activities and educational programming about the city's waterways, public art, architecture, environment and vibrant cultures. There is no formal start or finish to the event, and all are welcome to attend.

Some through streets will allow traffic to cross South Street during the closure. Police officers will be stationed at select north-south street corners along South Street to allow traffic through at intervals. Organizers are working with SEPTA and the police in advance to ensure a smooth and orderly event.

A detailed map and further details of the event route is available at www.phillyfreestreeets.com.

Philly Free Streets Comes to South Street



On Saturday September 24, the entire length of South Street between the Schuylkill and Delaware Rivers will be closed from 8 a.m. to 1 p.m. to allow pedestrians, bikers, runners and strollers to travel freely.

When the Pope came to Philly last year, people discovered they loved having the

Claire Batten and **Keri White** are the dynamic duo behind Philly Food lovers. They are business partners in KCC, a marketing and copy-writing agency.

QUEEN VILLAGE FAMILY DENTISTRY
JEFF CABOT, DMD
WWW.QUEENVILLAGEFAMILYDENTISTRY.COM
215-925-7330

Old Pine Street Church
 Established 1768
 Where History, Faith, Message, Music & Fellowship intersect at
 412 Pine Street
 Sunday Worship 10:30am
 215-925-8051
www.oldpine.org

THE LIPPINCOTT

227 S. 6th Street



High-end, fully custom 2 bedroom plus den, 3 bathroom home with an open chef's kitchen with granite counter tops and wood cabinetry, exposed brick walls in the living area, 11 foot ceilings with exposed beams, fireplace, private terrace with city views, and beautiful dark oak floors throughout. Parking and storage space in the building are included.
2,189 sf | ~~\$2,100,000~~ PRICE REDUCED \$1,895,000



3 bedroom plus den, 3 bathroom built from raw space featuring a spacious great room with a fireplace, balcony boasting sunrise city views, and adjacent dining room. There is a chef's kitchen, den with exposed brick, gorgeous hardwood floors and beautifully appointed marble bathrooms. Climb a stunning spiral staircase to the home's crown jewel, a second floor private roof deck offering city views to the north. 2,306 sf | \$1,795,000



Custom designed 2 bedroom plus den, 2 bathroom with oversized windows that literally bring Washington Square into the home. The residence features high ceilings, exposed ductwork, an open chef's kitchen and lavish master suite. Bathrooms are beautifully appointed in marble. There are hardwood floors and designer finishes throughout. 1,775 sf | \$1,495,000

AD Allan Domb Real Estate
PHILADELPHIA'S LARGEST SELLING CONDOMINIUM REALTOR® WE COOPERATE WITH ALL REALTORS®
1845 Walnut Street, Suite 2200, Philadelphia, PA 19103 Phone: 215.545.1500 allandomb.com domb@allandomb.com



EQUAL HOUSING OPPORTUNITY

Aging in Place Challenges

Get the Facts; Know Your Options

As older Americans increasingly decide to forgo selling their homes and moving into retirement or assisted-living facilities, previously unconsidered challenges to their independence, psychological state and emotional well-being have become apparent. Join Patty Grace, Home Helpers Area Manager and nationally recognized eldercare expert, on September 28, 7 to 9 p.m., at Pennsylvania Hospital, Zubrow Auditorium, to discuss challenges of aging in place and solutions to stay safe. Light refreshments will be served.

Exercise and Socialize

The end of the summer brings cooler days and colorful foliage. Enjoy both with your neighbors in these walking groups.



The **Walkie/Talkies** meet at Three Bears Park, Delancey Street between 2nd and 3rd Streets, on Tuesday and Thursday mornings at 8:15 a.m. for a one-hour stroll through our historic community. Anyone is welcome to participate in this non-stressful, one-hour exercise & socialize program.

“Philly Is Walking In The Park!” meets at the fountain in the center of Washington Square, 6th and Locust Streets, at 8 a.m. on Mondays, Wednesdays and Fridays for a half-hour, self-paced walk through our historic, beautiful park, led by neighbor Dr. Lisa Unger. All are invited to join us.

SAVE JEWELER’S ROW!

Jewelers’ Row is composed of more than 300 retailers, wholesalers and craftsmen, located on Sansom Street between 7th and 8th Streets, and on 8th Street between Chestnut and Walnut Streets.

A suburban developer wants to demolish six buildings on the Row in order to put up a new luxury apartment tower. Jewelers Row is America’s oldest and second-largest diamond district in the nation. Its enduring charm comes from the intimate small-scale shops and storefronts that have lined this brick-paved thoroughfare for 150 years. Gouging out these six buildings will forever alter Jewelers’ Row and ruin one of our city’s most iconic destinations.

Visit www.change.org/p/anne-fadullon-save-jewelers-row to sign a petition asking to Save Jewelers Row!

Plumer & Associates, Inc.
Realtors

Plumer

Center City’s largest independent Realtor.
Serving Philadelphia since 1923.

**Residential,
Commercial,
and Investment
Real Estate**

For a complete listing of Center City properties visit our website:
www.plumerre.com



226 South Street, Philadelphia
info@plumerre.com
215 922 4200

Our record speaks for itself.

Kathy, Patrick and the
Conway Team

BERKSHIRE HATHAWAY HomeServices
Fox & Roach, REALTORS

conwayteam.com • kathy@conwayteam.com
215-266-1537 • 215-627-6005



**SMART
RESPONSIVE
EXPERIENCED**
Bari Shor
**Real Estate
MatchMaker**

Whether you're selling or buying
a home in amazing Center City,
Bari Shor cares and *delivers* for you.

I am your neighbor,
let me be your Realtor,[®] too!



**BERKSHIRE
HATHAWAY**
HomeServices

Fox & Roach, REALTORS[®]

215-790-5678
Barishor@aol.com
215-546-0550 x 5678

Hi Tech. Hi Touch.

A Winning Combination —
in Person and on the Web!



Buying? Selling?
Please call or email your
neighbor, Rosemary Fluehr.

**Know someone who's
Buying or Selling?**
Let me know. Referrals are
the strength of my business.

Rosemary Fluehr

Associate Broker, GRI

215-440-8195 – Direct
215-627-6005 – Office
215-514-9884 – Cell

rosemary.fluehr@foxroach.com
www.rosemaryfluehr.com
530 Walnut Street, Suite 260
Philadelphia, PA 19106



**BERKSHIRE
HATHAWAY**
HomeServices

Fox & Roach, REALTORS[®]

DAMON MICHELS, REALTOR



cell 610.731.9300
office 610.668.3400
Damon@DamonMichels.com
www.DamonMichels.com

*Specializing in The Main Line
and Center City*

180 HOMES SOLD IN 2014!

BERKSHIRE HATHAWAY | **Fox & Roach,**
REALTORS[®]
HomeServices

Elfant & Wissahickon
— REALTORS[®] —

**Your Neighborhood Resource
For Everything Real Estate**

Claudia McGill
215.893.9920 claudiamegill.realtor



Guide to Historic Society Hill Now Available for Purchase

If you would like to secure one or more copies, please fill out the form below and forward with a check or money order to SHCA, P.O. 63503, Philadelphia, PA 19147. Make check payable to the **Society Hill Preservation Fund**.

___ **One (1) copy** \$10.00
plus shipping and handling \$4.00
Total Cost: \$14.00

___ **Two (2) - 10 copies**
___ copies x \$8 each = \$ ___
plus shipping and handling \$10.00
Total Cost: = \$ ___

___ **More than 10 copies**
___ copies x \$7 each = \$ ___
FREE shipping and handling

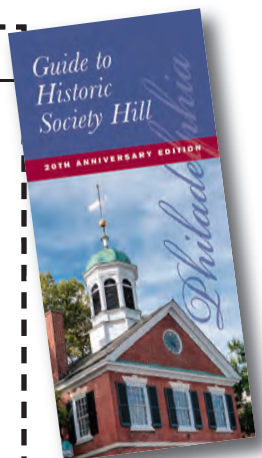
Send Guides to:

Name _____

Address _____

Apt. # _____

City, State, Zip _____



MEMBERSHIP REPORT

BY MATT DEJULIO

2016 Membership Drive Marks a New Record

SHCA membership reached an all-time high of 1,112 by early August, which surpasses last year's record of 1,103. The record prior to last year was 1,068 in 2013.

With a few months left to go before the books for 2016 are officially closed and renewals go out in November, we can be proud of another record-breaking year. More and more residents are realizing that our volunteer organization fights on many fronts for their behalf.

We welcome 135 new members so far this year and ask the 86 members who have not renewed to reconsider their decision.

As a special bonus this year, every member may receive a **free** copy of the recently published *Guide to Historic Society Hill*. Just email mattdejulio@aol.com and let him know you wish to be put on the distribution list. You may receive it electronically if you prefer that over the spiral bound edition. The book will retail for \$10 and will be available at the Philadelphia History Museum. An order form is below for those who wish to purchase extra copies by mail.

We welcome each of the over 3,600 households to join SHCA. Your civic association helps protect your real estate investment by funding many of our improvement projects, as well as providing subsidies to neighbors who plant trees and fix their sidewalks. We help enhance your quality of life when we advocate on your behalf regarding zoning changes, real estate taxes, crime problems and traffic issues. All of this is accomplished through the hard work of our dedicated board of directors, committee members, block coordinators and most importantly, your membership dues.

Without member dues, SHCA would cease to function. Protect your neighborhood and your real estate investment. **Sign up today!**

Email mattdejulio@aol.com with questions or comments which will be shared with our board members representing every quadrant in our unique, historic neighborhood.

Matt DeJulio is a retired publishing executive. He has served as SHCA's administrator since 2001.



Society Hill
CIVIC ASSOCIATION

Membership Application

Name _____

Address _____ Apt. # _____

City, State, Zip _____

Home Phone _____

Work Phone _____

Email (print clearly) _____

IMPORTANT: Today, most everyone communicates via email. Please be sure that we have your current email address – so that you can receive important updates between publication of our community newsletter. All SHCA emails will be judiciously screened, and rarely will we send emails more than once a week. Nor will we share your email address with anyone else. This convenient, 21st-century system helps save our civic association postage costs, while keeping you regularly informed.

Residential Memberships

- \$ 50 Basic Household Membership
- \$ 40 Senior/Student/Single
- \$ 100 Federal Friend
- \$ 150 Georgian Grantor
- \$ 300 Jefferson Benefactor
- \$ 500 Washington Benefactor
- \$ 1,000 Benjamin Franklin Benefactor

Business Memberships

- \$ 100 Institutions – 5+ employees
- \$ 60 Institutions – fewer than 5 employees

Additional Contributions

\$ _____ Washington Square Beautification \$ _____ Franklin Lights

\$ _____ Sidewalk Cleaning/Graffiti Removal \$ _____ Tree Tenders

\$ _____ Zoning and Historic Preservation \$ _____ McCall School

Total Enclosed \$ _____

Charge VISA/MasterCard:

Number _____ Exp Date _____

Signature _____

The following topics are of special interest to me. I welcome receipt of email updates on these topics.

- Clean-Up Day Washington Square Zoning & Historic Preservation
- Franklin Lights Social Events Fundraising
- Dilworth House Property Taxes Local Crime
- Reporter Casino Issues Incidents and Alerts

Please return completed application to:
Society Hill Civic Association, P.O. Box 63503, Philadelphia, PA 19147

NIFTY NEIGHBORS IN MY OWN BACKYARD

BY JANE BIBERMAN

Jim and Marsha Moss

A Dynamic Couple

They met at a party. “Jim arrived at midnight and rather than a gift of wine, he brought ice cubes, just as the party’s last cube melted,” recalls Marsha, adding, “I liked his sense of humor.” “And I liked Marsha’s stories about her recent experience as a student guide in Moscow,” remembers Jim.

Soon after they married, the couple moved to Elkins Park to raise their two children, Michael and Meredith. Jim, a graduate of Penn Law School, began practicing in Philadelphia. Marsha earned a graduate degree and taught high school. “We were both very involved in our community and in politics,” says Marsha, “but Jim won the prize when he was selected as a McGovern delegate to the Democratic National Convention.”

Life was good, but limiting, so they eagerly returned to the city. Society Hill Towers became their home. “The Towers was a key component in the revitalization of Society Hill, and it continues as a positive beacon,” says Jim. He has served on its governing council for 20 years, currently as president.

Marsha, who is a public art consultant and a member of the Mayor’s Public Art Advisory Council, has contributed to the vibrancy of the Society Hill and the city at large. As director of Sculpture Outdoors, she curated over 50 exhibitions on public and alternative sites within Philadelphia and across the country. In the mid-90s, she founded the Artfront Partnership, a venture that commissions artists to transform dark vacant storefronts into illuminated dynamic Artfronts.

She explains that public art can be any material, any style, any size — from modest to monumental. It may be integrated into a specific site or it can be an object on a pedestal. In Society Hill, the Dilworth Memorial, by Emlen Etting, is a good example: “It was relocated by the Center City District from Dilworth Plaza to a site adjacent to the Society Hill Towers. ‘Phoenix Rising’ has become a landmark and a symbol of the rebirth

of Society Hill. And with its dynamic personality, it has also given life to a lifeless space.” Marsha adds, “When great cities of the past are judged, we think of the quality of their art, architecture and culture. Art also boost’s the city’s economy, as it enriches the experience of living, working and visiting Philadelphia. We have the largest collection of public art in the country. It’s everywhere — from Three Bears Park to corporate plazas, the International Airport to the Ben Franklin Bridge, and from high-rise rooftops to the underground SEPTA stations.”

It’s work that Jim enjoys too, especially when travel is involved. “The best was Marsha’s exchange program with China in the 80s,” he says. “She took an exhibition to China and returned to the States with a different show of Chinese artworks. A fantastic experience! But the real benefit has been the friendships gained with so many artists — really amazing people.”

Apart from his law practice, Jim has been very active with the SHCA. “It’s been hugely rewarding to participate with so many neighbors to preserve what’s best about our historic Society Hill. In recent years I chaired the legal committee, where my major role was negotiating with developers to secure protections and benefits for the community. Zoning issues are always with us. Most imminent is the planning for Foglietta Plaza, where tentative proposals include a Memorial Park and the return of the International Sculpture Garden.”

As counsel for the Central Delaware Advocacy Group, Jim’s been involved in its effort to advance the Master Plan for the waterfront. “After 50 years of aborted proposals, there will soon be significant progress in the development of Penn’s Landing,” he says.

If there’s room for improvement in Philadelphia, Jim believes it’s the overarching issue of public education. “It’s hardly profound, but true: we owe all our children a high-quality education. The return on investment is huge: enriching



The Mosses in front of ‘Phoenix Rising.’

lives, reducing the cost of the social safety net and the justice system, boosting the economy and persuading our booming young population to remain in the Philadelphia as their families grow.”

The couple notes that Society Hill has been called “America’s First Neighborhood.” Living in an historic district in a World Heritage City, Marsha and Jim believe we need to preserve the best of Society Hill as we seek to enhance the lives of its residents. “I’m confident that SHCA will remain its successful champion,” says Jim.

“We’ve been here for three decades and love it,” says Marsha. “I feel the charm of Society Hill each time I walk down a cobblestone street. And I anticipate our community’s vital future as more and more young and diverse families move in with new energy.”

Both of their children moved back to the area with their families. Michael, Aleeze, Owen and Kaya live in Society Hill; and Meredith, Katherin and Ethan live in Bucks County. “How lucky can you be!” exclaims Marsha.

Jane Biberman, freelance writer and former editor of *Inside Magazine*, has contributed to a variety of publications.

BANK LOCAL

Philly's most
advanced
neighborhood
bank.™

Tiffica Benza
Co-Owner,
Philadelphia Independents



(267) 295-6420
EastRiverBank.com

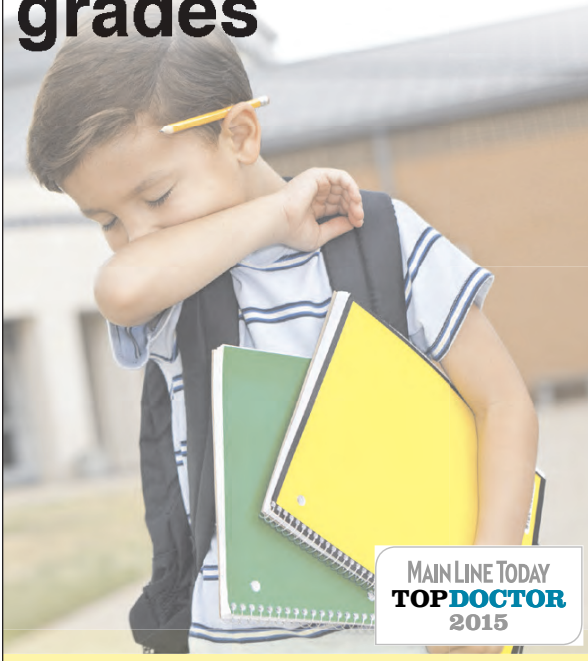


Christopher P. McGill, President & CEO



EAST FALLS | ROXBOROUGH | OLD CITY (36 North 3rd Street)

Allergies can make it harder to get good grades



Studies show that students with untreated allergies have significantly lower learning scores than their classmates without allergies along with more missed days from school.*

Allergy & Asthma Specialists

Extraordinary in many ways:

- Fellowship-trained, board certified allergists
- State of the art allergy skin testing
- Advanced pulmonary function testing
- The area's most trusted source for allergy extract in 3 forms: injections, drops, or tablets.



1-800-86 COUGH

AllergyAndAsthmaWellness.com

Blue Bell • Pottstown • Jenkintown • Philadelphia
King of Prussia • Lansdale • Doylestown • Collegeville

*Source: American Academy of Allergy, Asthma and Immunology

THE ESTATE HOMES AT 4TH AND LOCUST



The Shippen-Wistar and
Cadwalader Estate Homes
238-240 S. 4th Street

A chance to live in history!

The Estate Homes at 4th and Locust provide a rare opportunity to create a custom mansion from the combination of two Society Hill residences. The property has a tremendous history. One house was built in 1750 and the other in 1829, and both have the potential to be restored to their original grandeur. The estate enjoys a prestigious location, large private gardens and approval for up to four off-street parking spaces. Also available as two individual homes.
13,673 sf | **\$4,950,000**

Walk the same halls as:

- George Washington
- John Adams
- Meriwether Louis
- Richard Henry Lee
- Francis Footlight Lee

AD **Allan Domb Real Estate**
PHILADELPHIA'S LARGEST SELLING CONDOMINIUM REALTOR® WE COOPERATE WITH ALL REALTORS®
1845 Walnut Street, Suite 2200, Philadelphia, PA 19103 Phone: 215.545.1500 allandomb.com domb@allandomb.com

